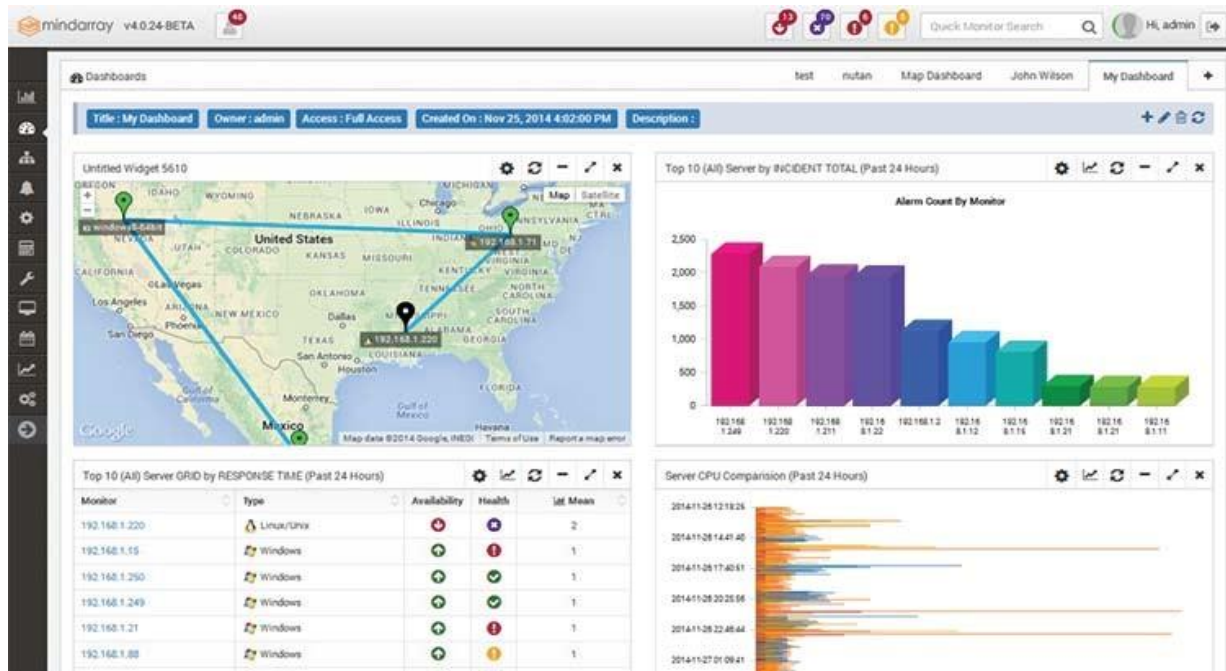




# Minder Network Performance Monitoring

Monitor everything about your Network performance



Discover, visualize and monitor your complete IT Infrastructure in less than an hour

Mindarray's Minder is a powerful platform built from the ground up to extend your ability to monitor entire IT spread across multiple locations. Minder's all-in-one, automated solution allows you to address all the monitoring challenges of the enterprise network environment. With multi-vendor and monitoring technology support, Minder supports wide range of infrastructure that includes network devices (firewall, switch, load balancer, WAN etc.), server and application.

Our Unified dashboard allows you to close the visibility gap in enterprise network, by providing deep insight into end to end components across application, device and server infrastructure. Minder enables network administrators to identify, diagnose and resolve network performance bottlenecks and outages by providing quick RCA and shortest downtime.

## Key Benefits to Business

- Comprehensive monitoring across Network Device, Physical and Virtual Server and Application.
- Receive alerts as soon as the bandwidth thresholds are crossed by monitoring by monitoring network bandwidth.
- Compare current network performance and utilization with Historical baselines and row data.
- Gain complete visibility by seeing the automatic network topology across network devices, server and application.



# Network Performance Monitoring – Datasheet

## Making Network Performance Monitoring Quick and Easy

### Device Availability and Performance Analysis

Quickly and easily monitor SNMP enabled network devices, all you need is IP address or host name and our built-in discovery will classify the device and configures template and widgets for monitoring and reporting.

### Automated topology mapping and one-touch RCA

Built in correlation engine and topology mapping algorithm allows presenting unified view, without any manual dragging and mapping. Resource dependency mapping provides quick RCA with dependent affected devices, servers and applications in entire network

### Universal Vendor Support

Monitor any device with universal signature mapping facility which is highly & easily configurable. Reduces dependency on support and allows custom monitoring. Out-of-the-box support for all the major device vendors for any router, switch, firewall, VPN concentrator, wireless access point, and many more.

### Network Routing and Multicast Monitoring

Informs you in near real-time about network instability, routing changes and automatically creates and assigns ticket to technician. Supports routing protocols such as BGP.

### Hardware Status Indicators

Easy to understand Network Health Indicator provides an instant summary of the status of all devices and events in complete infrastructure. Quick display of monitors, respective alarm events with severity are shown to give bird eye view with health trend.

### Integrated view with application performance dashboard

Get health, availability and performance dashboards with top/least N graphs, alarm history, one-click detail and dependent application for RCA.

### Smart Alerting

Pre-configured standard threshold rules and values, for quick start monitoring. Multi-level thresholds for warning and critical events, dependent node identification, correlation and event suppression or escalation as per severity. Custom configure levels as per your infrastructure needs.

## 3 Step monitoring with Minder5.0

### Step 1: Install the product

No restrictions – Windows/Linux OS on virtual/physical machine – all possible! Wizard driven installation takes few minutes and with auto discovery you see all your devices right in front of you!



# Network Performance Monitoring – Datasheet

## Supported Features

### **30 Minute Deployment**

Download, install, provide credentials and see infrastructure vital signs in your private unified dashboard. 'Minder automatically configures thresholds and dashboards for your ease of use – without manual efforts.'

### **Interactive flow based web interface**

Fully configurable and interactive web interface allows you to get to the root of the problem in just one click and it's easy to use.

### **State-of-the-art Visualization Engine**

Get reports at your fingertips for all stakeholders, from administrators to CIOs, with more than 700+ custom reports and widgets. Mix and match reports as per your requirement and setup your own views.

### **Role based Views**

Configure report views as per role and requirements of users. As NOC administrator will have own set of monitoring views to monitor minute by minute health, availability and performance however CTO will only look at the SLAs. All can be catered with unified dashboards.

### **Proactive notification mechanism and indicators**

Get proactive monitoring, event detection, reporting and problem escalation for mission-critical components of IT infrastructures through an intuitive Web application.

### **Unified Service Groups**

Logically group devices, server and applications as per your business requirement, irrespective of their location or department.

### **Reporting and Drag & Drop Scheduling**

Adaptive and automated reporting with 500+ pre-defined and configurable reports to take your data analysis to next level. Drag and drop scheduler to automate mundane tasks like emailing reports, executing scripts, power operations and much more.

## **3 Step monitoring with Minder5.0**

### **Step 2: Provide credentials of devices you want to monitor**

No more manual efforts to drag and drop or configure. Just give the credentials and you are ready to GO!



## Network Performance Monitoring – Datasheet

### Advance Features

#### **Behavioral Monitoring and Event Correlation**

Captures and processes events from various sources, including Device, Sever, application, SNMP trap, Event log, Syslog, configuration changes and bandwidth issues. Listens to events from any source by combining global/local and physical/virtual resources. Automatically Correlate Events with every component that is monitored using MindArray is fully aware of underlying L2 and L3 relationships. Knowing about events in real-time by mapping dependencies helps reduce the time for resolution. Analysis with Real-Time and Historical Event Trend reports

#### **XML based MIB parser**

Monitor any device with custom signatures with XML based MIB parser, which allows you to configure the MIBs details in XML, upload and system will start monitoring as per XML. No coding to comply new devices and 90% more time saving.

#### **Business Service Management**

Logical grouping of component to form service and align strategic business with IT. With 360° visibility into your enterprise network, MindArray's unified network performance management software allows you to optimize business process performance and uptime, and gives full visibility into database, web applications and also the network that supports the service. This provides End-to-end visibility of performance levels of IT business process, which eventually improves IT operational efficiency.

#### **SLA Compliance and Management**

Validate Performance and Availability of Critical Business Process with Effective SLA Management that helps analyzing performance at each layer. Proactive SLA Management and Real-Time Analytics user-centric data widgets for multiple SLA that can be created on multiple device, server and application under one Business process. Get much detailed granular performance measurement and identifying the actual events that affect the service level with detailed reporting.

#### **Fault Management**

Minder has capability to trigger alerts for poor network conditions with automated remedy actions to ensure SLAs are met with due diligence.

### 3 Step monitoring with Minder5.0

#### **Step 3: Voila! Dashboard is ready with vital signs of compete IT!**

In less than 30 minutes, Minder discovers & configures thresholds – automatically – across your infrastructure. So your network devices, your servers (virtual, in cloud, Linux, windows – all of them), applications (including your databases) are now under your watch from an Unified dashboard.



# Network Performance Monitoring – Datasheet

## Topology

Minder has built in capability to create network topology maps for detailed network analysis.

## Automated Discovery

Minder has capability to discover all IP enabled network devices.

## Reporting

Compliance and audit reporting have evolved as critical requirements of modern day IT operations. Minder has capability to generate custom reports as per specific compliance regulations.



Network Management



Server Management



Virtualization Management



Cloud Management



Application Management



Web Server Management



Middleware Management



Database Management



# Network Performance Monitoring – Datasheet

## Minder Feature List

### Network Monitoring

- Auto Discovery of Devices
- Routers
- Switches
- Firewalls/UTM
- Wi-Fi APs & Controllers
- SmartUPS
- Any IP-enabled Device

### Application Server

- IIS
- GlassFish
- JBOSS
- Tomcat
- WebLogic

### Database Monitoring

- Microsoft SQL Server
- MySQL
- Oracle Database Server
- PostgreSQL

### Virtualization Monitoring

- VMware
- Hyper-V
- Citrix Xen

### Cloud Monitoring

- Amazon EC2
- Google App Engine

### URL monitoring

- Web URL

### Configuration Backup

- Network Configuration Management
- Change Management

### Server Monitoring

- Linux
- Windows

### Web Monitoring

- IIS
- Apache
- NGINX

### Email

- Microsoft Exchange

### Services

- Microsoft AD 2000, 2003, 2008
- DNS
- Ping
- Service Port
- Domain
- JDBC
- Mail

### Management Portal

- Web Based Console

### Reporting

- Custom Reports
- Availability Reports
- Performance Reports
- Resource Utilization
- Change Audit Reports (Devices)
- Top N Reports

### Class of Services

- User Defined Departments
- Custom User Privileges

### Dashboards

- Custom Templates
- Discovery Status
- Device Status
- Inventory Details
- Vendor Details
- Server monitoring
- NetFlow
- Alarm based on severity
- Availability

### Network Flow

- netflow v5, v9
- IPFix
- sFlow
- jFlow

### Protocol Support

- SNMP v1, v2, v3
- SSH
- PowerShell/WMI
- L2, L3 Protocols
- HTTP/HTTPS
- TFTP
- FTP

### Notifications

- Fault Management
- Integration with Email, SMS

### Troubleshooting

- Automated Correlation
- Fault Alerts via Notification and web GUI

### Add-on Modules

- Business Service Management
- SLA



# Network Performance Monitoring – Datasheet

## System Requirements

Mindarray's Minder is very low foot print product, which in turn helps you with much lower TCO (Total Cost of Ownership) for the product.

| Hardware | Minimum Requirements  |
|----------|---|
| CPU      | Dual Core Processor, 2GHz+                                    |
| RAM      | 4GB   |
| HDD      | 30GB free disk recommended                                    |
| Software | Minimum Requirements  |
| OS       | Any Windows Server, 64-bit                                    |
| Browser  | IE 11+, Firefox 30+, Chrome 30+                               |
| Database | In-built PostgreSQL database, no external database deployment |

NOTE: The minimum server requirements listed above are based on default configurations only. The requirement may change depending upon load on system.

## About Mindarray Systems

MindArray is an IT performance management suite for businesses and organizations to monitor and analyze performance across multiple applications and network resources. MindArray helps you take control of your dynamic IT infrastructure by cross-domain monitoring, multiple product support, SLAs, forecast analytics and other impressive features. Driven by innovation, MindArray is built from the ground up to provide next generation IT management. MindArray's cost effective management solutions can be deployed in less than hour and are designed to avoid dependence on any server host.